



19 Lowther Drive, Prescot, L35 0NG

Asking Price £300,000



Welcome to Lowther Drive, Rainhill – a beautifully extended three-bedroom detached bungalow situated in one of the most sought-after areas of Rainhill, Prescot. This delightful home offers generous and versatile living space, ideal for a range of buyers seeking a well-connected yet peaceful location. Conveniently located within walking distance to Rainhill Village and its train station, the property also benefits from excellent transport links and motorway connections, making commuting straightforward and stress-free.

The internal accommodation briefly comprises a porch leading into the entrance hallway, two well-proportioned double bedrooms, a modern family bathroom, a fitted kitchen, and a spacious living room. To the rear, a bright conservatory overlooks the garden, while an extended third bedroom or additional lounge offers flexible living arrangements to suit your needs. Externally, the front of the property features a lawned area, ample off-road parking, and access to a detached garage. The private rear garden is perfect for relaxing or entertaining, complete with a patio area and further access to the garage.

This attractive bungalow is offered for sale as Freehold and comes with an EPC rating of D, presenting a fantastic opportunity to own a home in this desirable location.

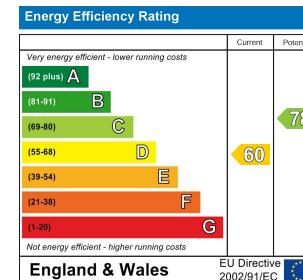
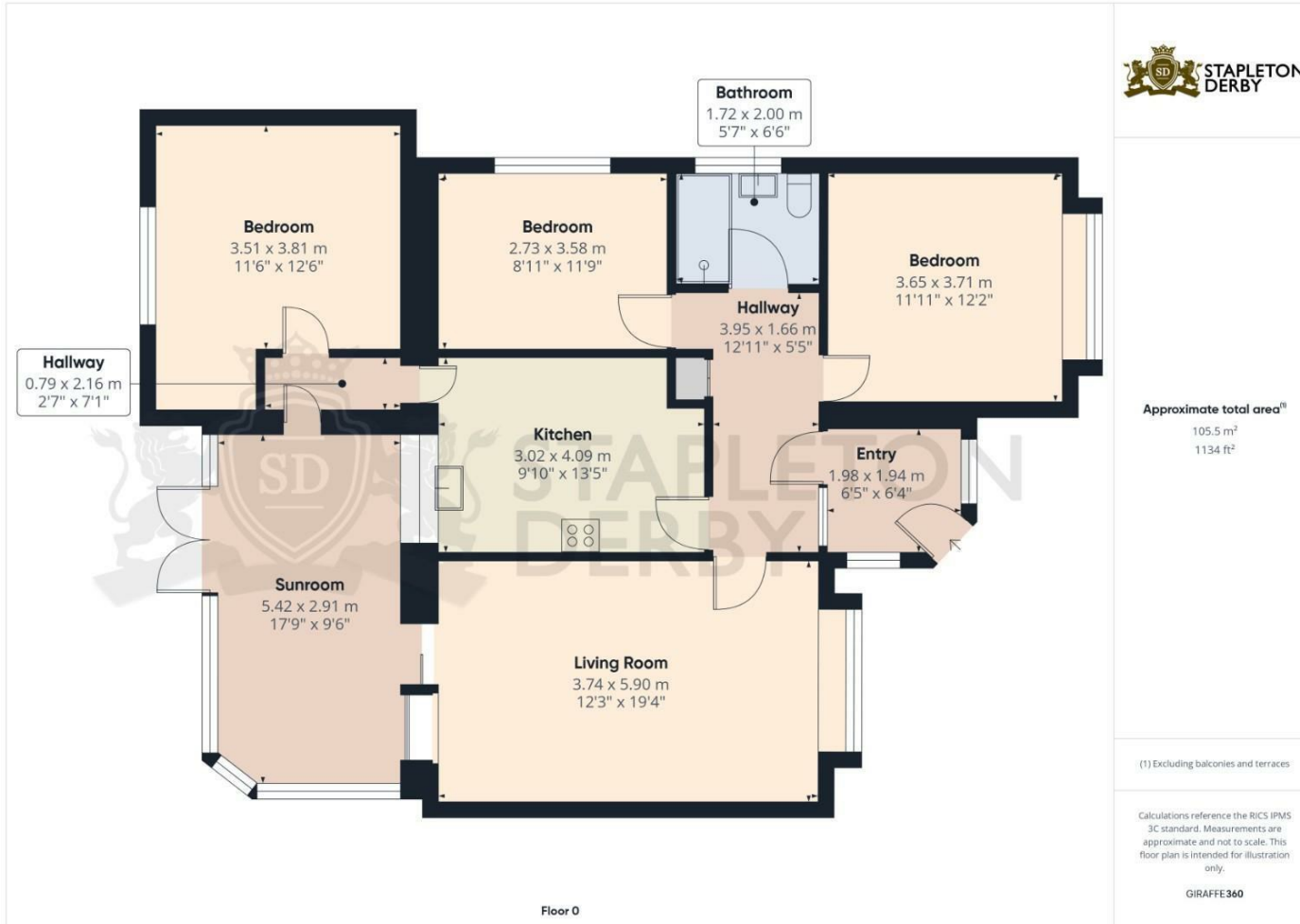








Stapleton Derby
497 Warrington Road Rainhill, Merseyside, L35 0LR
Tel: 0151 430 0717
office@stapletonderby.co.uk
www.stapletonderby.co.uk



IMPORTANT NOTICE TO PURCHASERS

We endeavor to make our sales particulars accurate and reliable, however, they do not constitute or form part of an offer or any contract and none is to be relied upon as statements of representation or fact. Any services, systems and appliances listed in this specification have not been tested by us and no guarantee as to their operating ability or efficiency is given. All measurements have been taken as a guide to prospective buyers only, and are not precise. If you require clarification or further information on any points please contact us. Fixtures and fittings other than those mentioned are to be agreed with the seller.